

## CHECKLIST - EMMA TAPLEY



Emma Tapley  
*After Life / Inversion, 2024*  
Oil on Linen  
40h x 60w in  
ET026

\$ 18,500.00



Emma Tapley  
*After Life / Central Park, 2024*  
Oil on panel  
36h x 48w in  
ET019

\$ 15,000.00



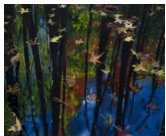
Emma Tapley  
*After Life / Amongst The Trees / Inversion / Greenbelt I, 2024*  
Oil on panel  
24h x 30w x 2d in  
ET017

\$ 7,500.00



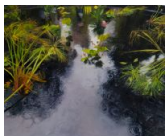
Emma Tapley  
*After Life / Amongst The Trees / Inversion / Greenbelt III, 2024*  
oil on dibond  
20h x 24w in  
ET016

\$ 5,000.00



Emma Tapley  
*After Life / Amongst The Trees / Inversion / Greenbelt II, 2024*  
Oil on dibond  
20h x 24w in  
ET018

\$ 5,000.00



Emma Tapley  
*After Life / Inversion / Madison SQ Park, 2024*  
oil on dibond  
20h x 24w in  
ET020

\$ 5,000.00



Emma Tapley  
*After Life / Inversion / Madison SQ Park II, 2024*  
oil on dibond  
20h x 24w in  
ET021

\$ 5,000.00



Emma Tapley  
*Amongst The Trees: Sointula, 2023*  
Oil on panel  
8h x 10w in  
ET022

\$ 2,000.00



Emma Tapley  
*Amongst The Trees II / Sointula BC, 2023*  
Oil on panel  
8h x 10w in  
ET023

\$ 2,000.00



Emma Tapley  
*Amongst The Trees Sag Harbor, 2023*  
Oil on panel  
8h x 10w in  
ET025

\$ 2,000.00



Emma Tapley  
*Amongst The Trees III Sointula, 2023*  
oil on panel  
8h x 10w in  
ET024

\$ 2,000.00