

# J IVCEVICH: *shreds*

February 19 – March 22, 2014

opening reception: Thursday, February 20, 6-8 p.m.



*Blue Mandala Diptych I*, 2013, acrylic relief on linen, 36 x 56 inches.

Garvey | Simon is pleased to present **J IVCEVICH: *shreds***, an exhibition highlighting the artist's most recent reinterpretations of shredded subway posters found both in New York City and other places in his travels. This will be Ivcevich's second solo show in New York and his eleventh solo exhibition in the U.S. **The opening reception will be held on Thursday, February 20, from 6-8pm; the artist will be present.**

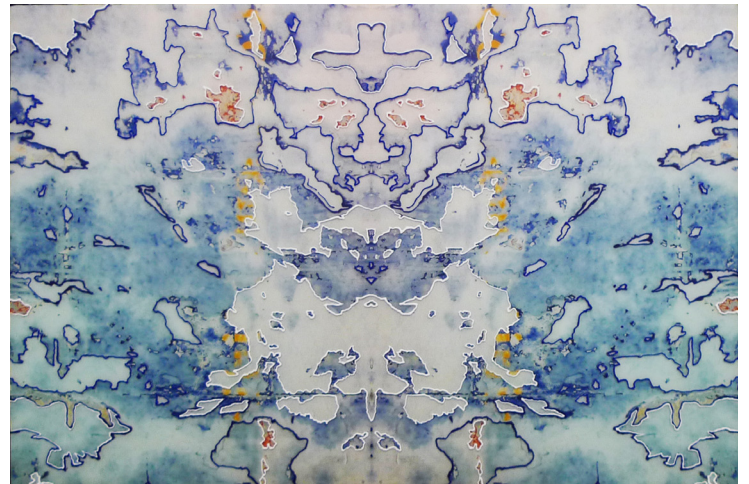
J Ivcevich portrays urban deterioration and grit in clever and unexpected ways. Taking inspiration from the "found compositions" of shredded advertisement posters around New York and elsewhere, Ivcevich photographs these abstract and collage-like forms as the basis for this body of work he aptly titles "shreds." Drawn to the abstract geometry of these images, the artist fragments them further with calibrated replication and distillation of various shapes from this field of torn paper. Using photography and several unusual painting techniques, the artist once again showcases his love of experimentation. Via his signature application of acrylic paint with a dental syringe, the artist outlines selected forms in a bold, three-dimensional line, and fills in (either digitally or by hand) larger shapes of opaque color as the paintings evolve. His work offers commentary on the short-lived bits of information in our society, the traces left behind and the possibility to find an inherent, Zen-like formal beauty amidst the chaos.

The focus of this exhibition will be several major monochromatic paintings on raw linen. In these reductive works, the artist distills his subject down to its most skeletal self. The paintings are akin to memories or fossil-like remains of what was once something entirely different contextually. In many of the new works, Ivcevich creates what he calls "mandalas." These paintings

are derived from the digital manipulation and mirror-imaging of certain shred subjects. The mandalas are also presented in the form of epoxy resin paintings over photographs – miniature, multi-paneled compositions as well as larger, bold abstractions. The result is a trippy, Rorschach-like arrangement of his already sifted imagery, which produces a mesmerizing, and often spiritual connection as the viewer finds shapes and forms that resonate like a primal, pictorial language.

Entirely self-taught, Ivcevich started life as a visual artist in Atlanta after graduating from Emory University with a degree in sociology in 1994. During that time, he also pursued a career as music producer and DJ. Music continues to be a strong influence and complementary component in his work. Ivcevich is a recipient of the prestigious Pollock-Krasner Foundation Grant and was also featured on the cover of *New American Paintings* in both the Southeast and Northeast editions. His work can be found in several corporate and museum collections. He has exhibited in group shows both internationally and throughout the U.S.

Garvey | Simon Art Access is a hybrid art advisory and contemporary gallery. Our special focus on the primary market is works-on-paper, drawing, and media requiring great technical precision and control. Our art advisory service was founded in 1999 by Elizabeth K. Garvey and specializes in American, Modern, and Contemporary Art. We deal actively in the secondary market as well, assisting our collectors in the discreet de-accession of selected works of art.



*Shred Mandala II*, 2013, c-print, acrylic relief, epoxy resin on panel, 20 x 30 inches.