



Alan Bray Inward Maine

Alan Bray explores the landscape of inland Maine via quiet rambles in the woods, kayak trips down forested streams, and most recently, Google Earth, where he can observe his surroundings from a foreign, aerial view. A poetic and visionary painter, his often-peculiar vistas celebrate the phenomena of nature in the ordinary.

Bray lives and paints in the central Maine Highlands (a less-traveled part of the state), where he was born, raised, and continues to reside. It is the attachment and familiarity with this unique natural environment that provides him with succour.

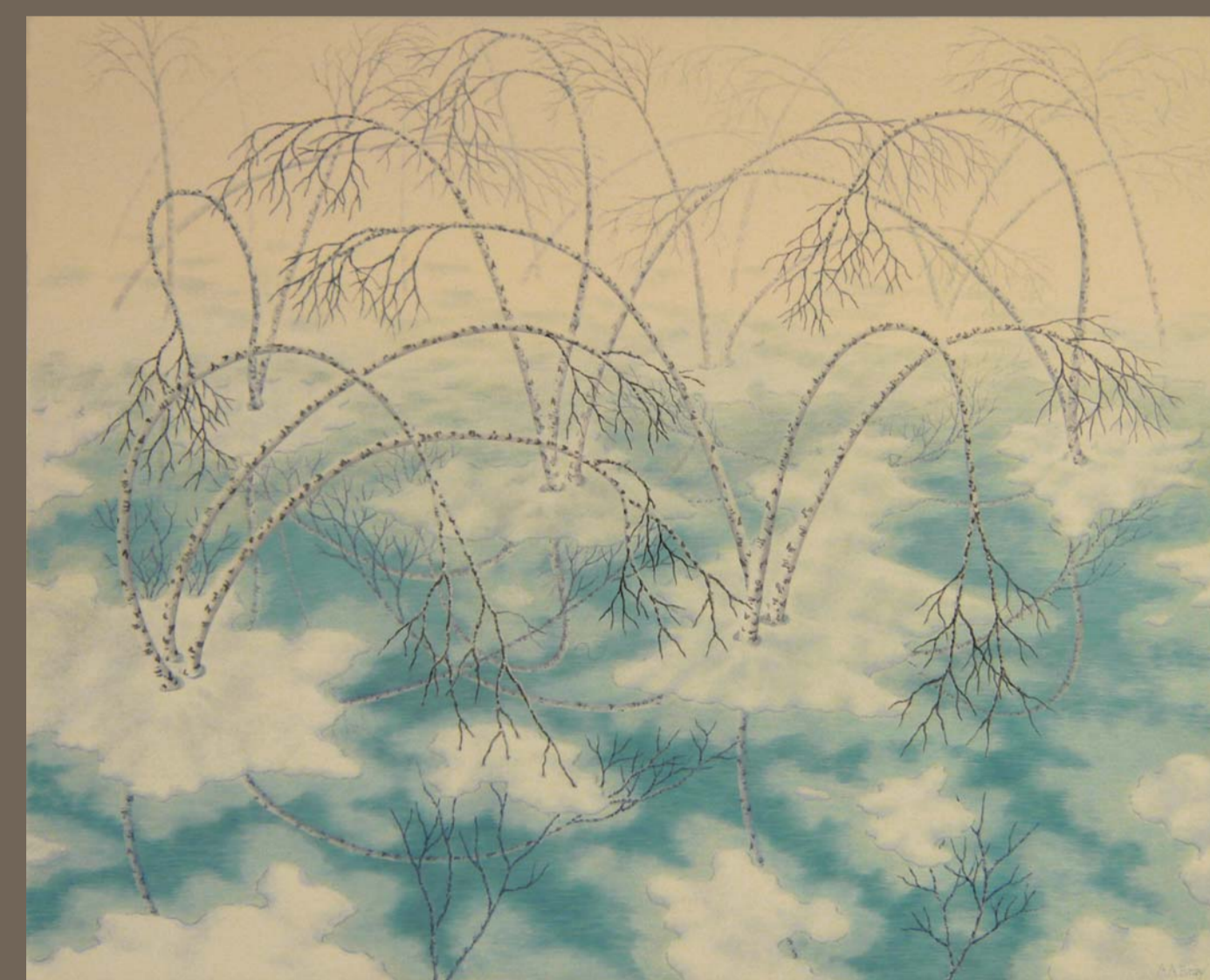
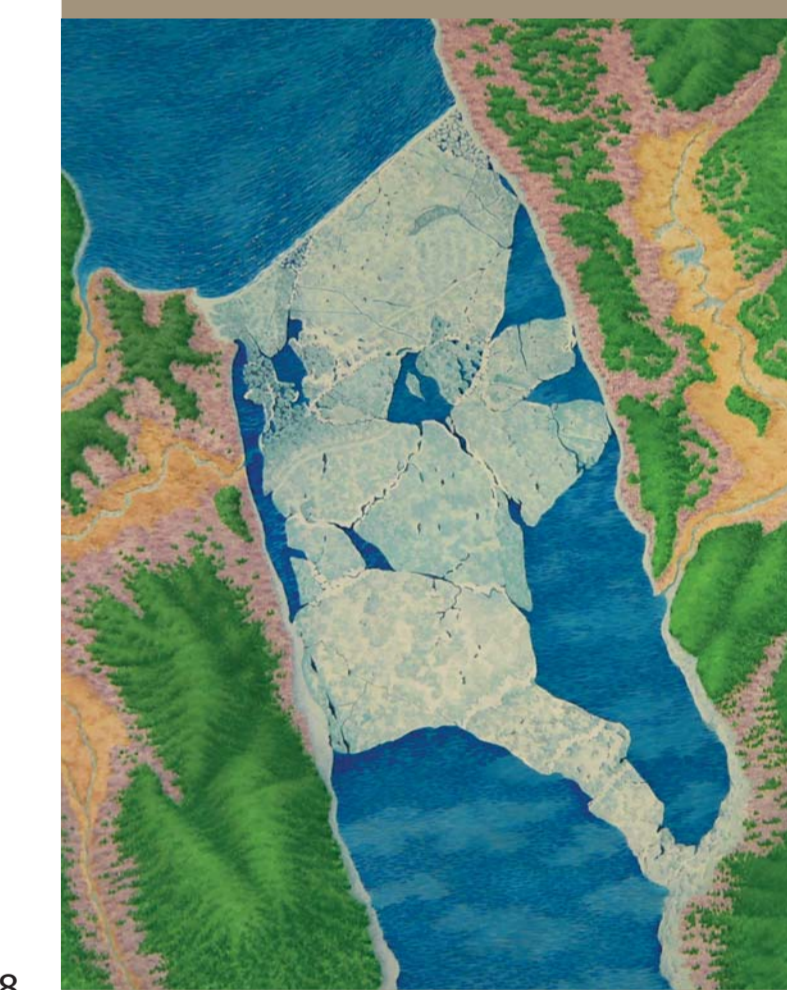


Bray's use of it necessitates thousands of miniscule brushstrokes built up in layers from a mirror-smooth void of white ground. Renaissance painting continues to inform his work as a mature artist, seen through the use of defined edges, bold colours, and the lack of atmospheric or romantic aspects in his paintings. Purity and crispness of line are found throughout Bray's work. Much of the phenomenological quality in his art comes from terrain vague, a French term that refers to in-between places. For Bray, this space is between the natural and the man-made world. None of his paintings feature people, rather we see the hand of man, often from the area's forestry industry.

After studying at the Art Institute of Boston and the University of Southern Maine, Bray traveled to Florence to attend Villa Schifanoia Graduate School of Fine Arts. It was in Italy where he discovered his passion for such masters as Fra Angelico and Pietro Lorenzetti.

Bray was surprised by the modernity of what he previously knew only from books and considered 'funny Christian stuff'. During this seminal time in his life, Bray's interest in casein painting was kindled. Casein is a milk-based tempera paint with virtually no drying time.

His compositions often develop over time as he witnesses nature slowly altering intimately familiar terrain. He captures quiet moments of transformation that would likely be unnoticed by passersby. This is the subtlety that defines Alan Bray's paintings.



- 1
January Thaw
2016, Casein tempera on panel
45.72 x 60.96 cm
- 2
Clearcut With Wildlife Trees
2015, Casein on panel
45.72 x 60.96 cm
- 3
Unburdened
2017, Casein tempera on panel
40.64 x 50.8 cm
- 4
Lost Ground
2010, Casein tempera on panel
40.64 x 50.8 cm
- 5
Swallowed
2017, Casein on panel
45.72 x 60.96 cm
- 6
Hillside
2016, Casein tempera on panel
50.8 x 76.2 cm

- 7
Four Things In The Wind
2015, Charcoal and conte
on paper
50.8 x 76.2 cm
- 8
Ice Dam
2017, Casein tempera on panel
60.96 x 45.72 cm